

Sharing online remote laboratory resources

- a new learning experience



Kjell Jeppson, Per Lundgren

Chalmers University of Technology
Solid State Electronics Laboratory
Göteborg, Sweden

J. del Alamo, J. Hardison, D. Zych

Massachusetts Institute of Technology
Cambridge, MA, USA

Sharing online laboratories

Experiences from using MIT WebLab in large classes (~350 students)

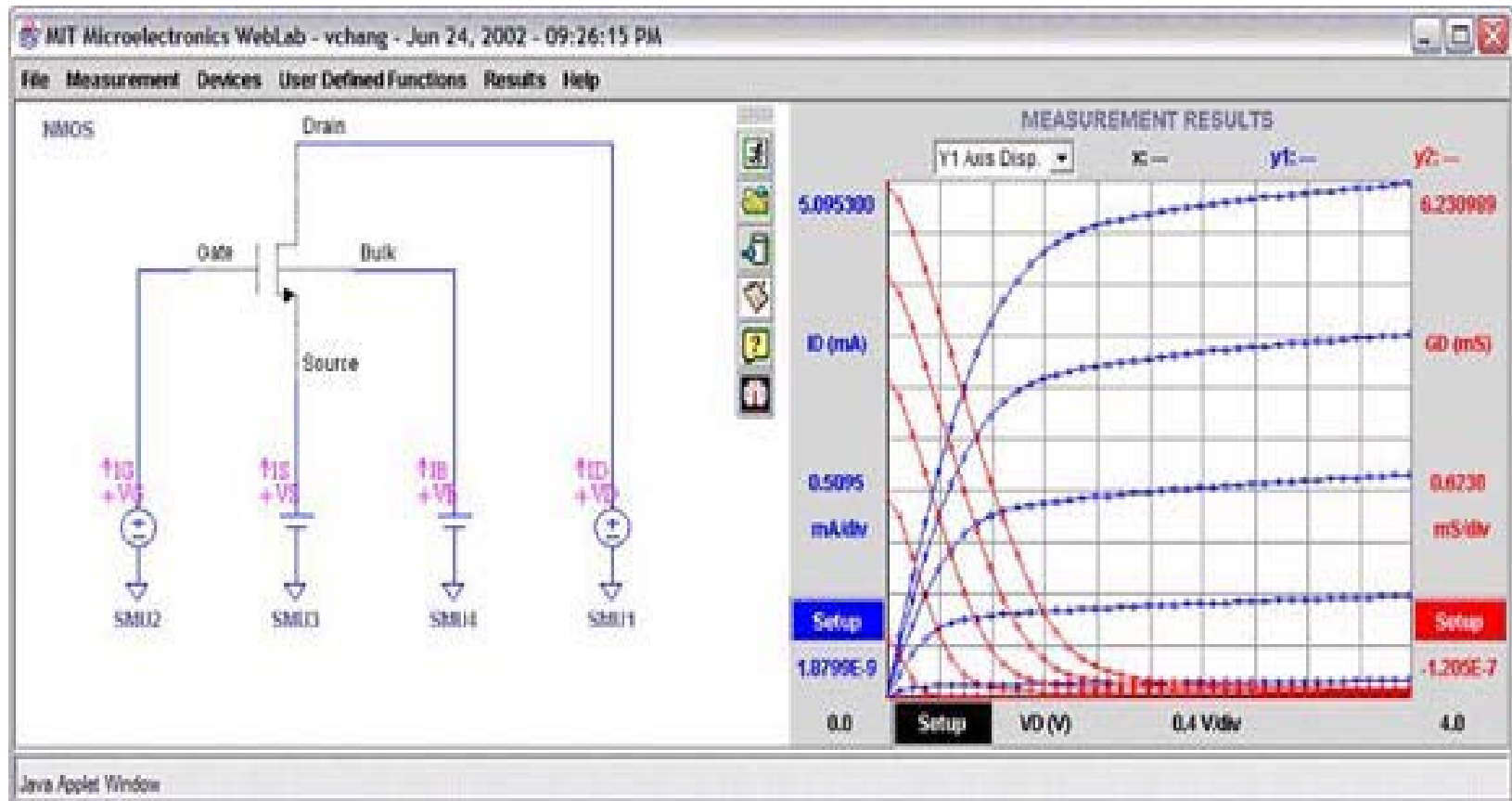
- What are critical issues for successful sharing?
- How do students perceive, relate to and use this new tool?
- How do we design courses to take full benefit from resources offered by sharing online laboratories?

So what is WebLab?

WebLab is a remote laboratory which is ...

- a cost effective way of opening up the laboratory hall for students 24 hours a day
- a cost effective way of making state-of-the-art equipment and devices available to students
- a measurement tool organized to simplify data acquisition and to minimize time spent on practical details
- more specifically, a MOSFET transistor characterization tool

WebLab graphical interface



Critical issues for sharing

- Lecturer must set course focus so that resources offered by the online laboratory can be fully appreciated by the students
- Fast and efficient communication between host and user sites when system goes down or device is broken
- Simple and self-instructive graphical interface
- Easy access – no waiting time
- Dependable – the system must be available whatever time students have chosen for their lab session

Different learning tools complement each other

- adding online laboratory exercises to courses previously without hands-on exercises is one thing...
- ...and replacing traditional on-campus laboratory exercises with remote ones online is quite another
- The on-campus and the remote laboratories are two qualitatively quite different learning tools - just as listening to a lecturer is something else than reading a book

Can shared online laboratories help create a competitive learning environment?

- We choose to change a traditional closed-task laboratory assignment to an open task where students were expected to plan measurements themselves and to find important device parameters to study
- Exploring device properties and how to model them must be an integrated part of the course

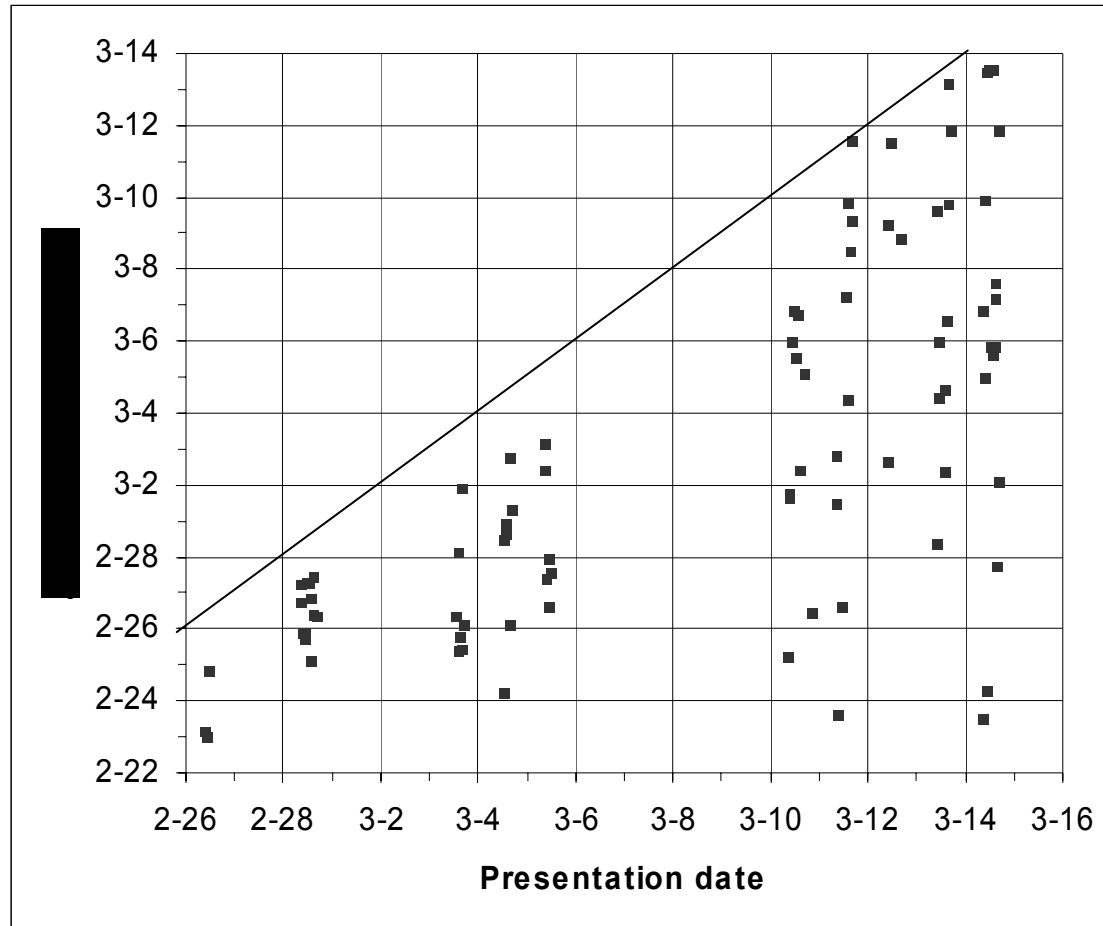
Measurement task

The objective of using WebLab became an issue of moving student focus

- from handling instruments for collecting data
- to analysing (readily available) data by comparing experimental data to models

Measurement results expected to be presented orally

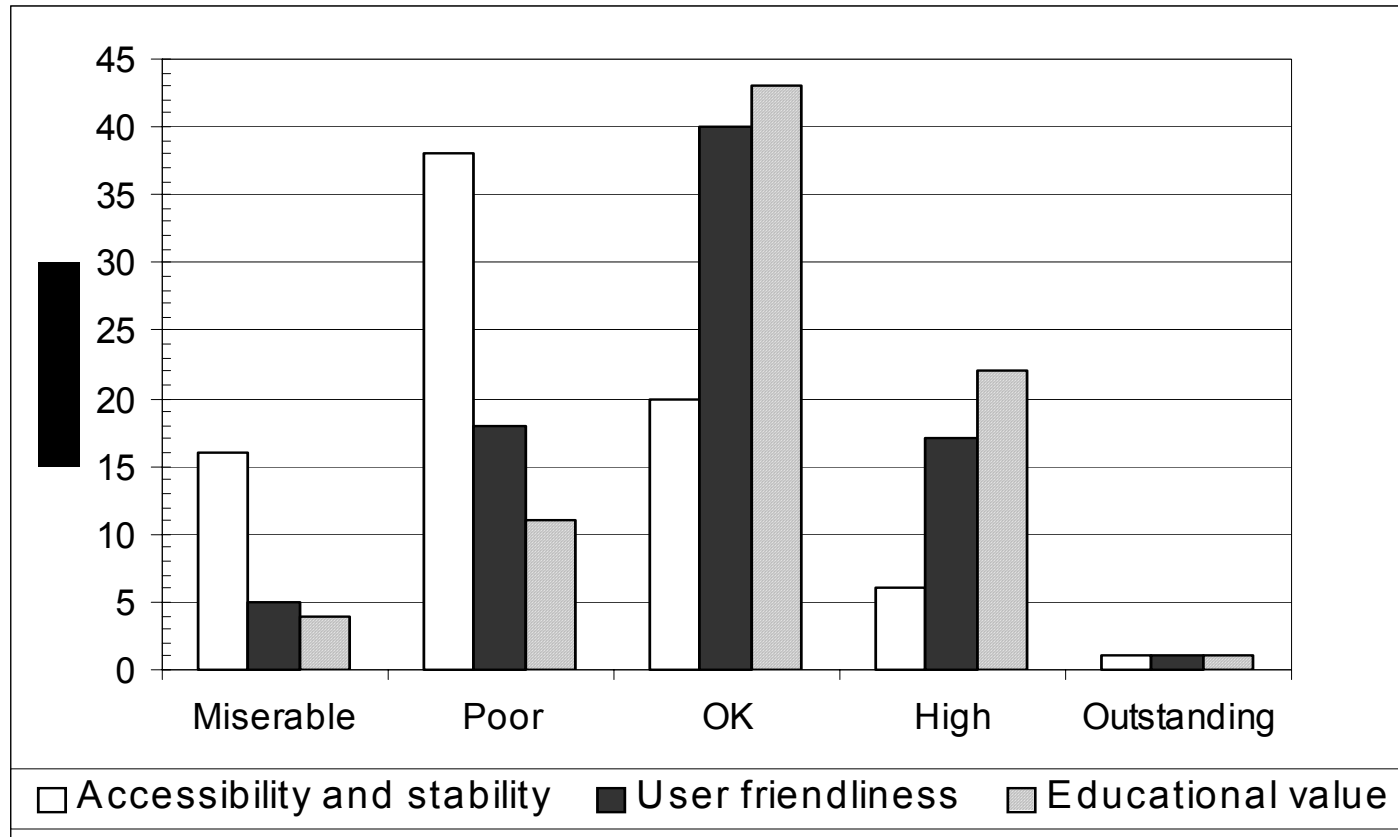
When did students login to WebLab?



Positive comments on WebLab

- Access (43%):
 - "You can decide for yourself when to do the laboratory exercise!"
 - "means less stress!"
 - "gives opportunity to see how different settings affect results"
 - "offers flexibility – you can work from home at your own pace"
- Interface (19%):
 - "Clear graphs!"
- Real devices (16%):
 - "You get a feeling for realistic values"
- Repeated use (15%):
 - "Measure one day – think a bit – then measure again!"
- Methodology (9%):
 - "focus is on assignment, not on instrumentation or wiring"
 - "avoids many practical problems"

What students thought about WebLab



“Accessibility” and “Educational value” ratings not correlated

Comments from MIT about expected technical problems

- The use of WebLab in undergraduate courses at Chalmers was the largest and most ambitious deployment of WebLab to date
- This was bound to result in identification of new bugs and problems not seen before

Peak performance

- On February 25, 2003 between noon and 1 PM EST WebLab performed 134 characterization experiments in one hour – on average that means one experiment every 27 seconds
- This was a 35% increase over previous WebLab record

WebLab vs hands-on

- WebLab provides "practical" device experience... (which is appreciated by students)
- ...but it gives no instrumentation experience
- However, avoids hassle with "boring" instruments
- For some students a real lab is always better – because then supervisor is available to assist and supervisor enthusiasm makes topic "easier" to grasp

Conclusions

- It is not trivial to design a course that takes full benefit from the resources offered by shared online laboratories
- Online laboratories are not replacements for traditional hands on laboratories
- The most important concern from the students' point of view is that of accessibility
- On the negative side, lack of supervision when stuck on trivial matters is considered very frustrating by many students